

Submittal Sheet

JOB NAME _____
ARCHITECT _____
ENGINEER _____
CONTRACTOR _____
LOCATION _____

SC-FS-301 CABLE DAMPER FLEX SHAFT ASSEMBLY

APPLICATION AND DESIGN

Flexible shafting is a direct mechanical method for transmitting rotary motion between two points.

Dampers can be controlled remotely through a selection of flexible shaft assemblies. A model SC-FS-1200 Worm Gear can be fastened to the shaft of a round or rectangular damper. A flexible steel shaft is coupled to the worm gear shaft and carried down to the ceiling line. A choice of termination options create a three part assembly.

OPERATION

Model SC-FS-1200 Worm Gear is self-locking and designed for 1/2" round or 3/8" square damper shafts. Fastened to the side of the damper and tightened onto the damper shaft.

- Optional 1200-1/4 for 5/16" round and 1/4" squared damper shafts.

FLEX SHAFT

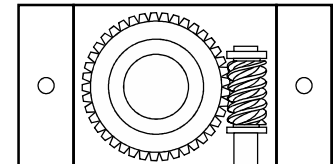
SC-FS-XX flex shaft is available in both standard and custom lengths up to 50'. The shaft includes a coupling to attach to the sheathing. The flexible shaft is a single wire around which successive multi-stranded layers of wire are wrapped. It is .250" in diameter with a brass finish and is capable of delivering more than 50 lbs of torque without damage.

- Standard lengths: 1', 3', 6', 8'
- Custom lengths up to 50'

TERMINATION

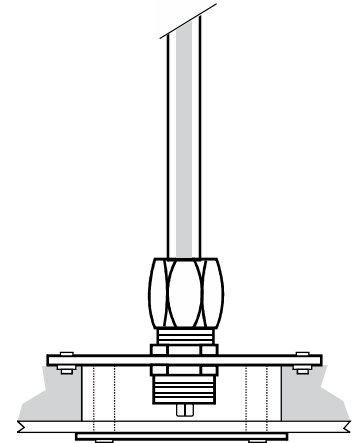
The SC-FS-301 is a 2-1/4" Zinc cup connector with a 3" Zinc plated cover designed to be imbedded in a Sheetrock ceiling.

- Options
 - Stainless Cover
 - Primer Cover
 - Chrome Cover
 - SC-FS-315 Adjustable Cover



SC-FS-1200
WORM GEAR

SC-FS-XX
FLEX SHAFT



SC-FS-301 CUP CONNECTOR

Flex Shaft is squared inside cup. Operate damper by removing cover and turning shaft with 1/4" socket wrench.

SPECIFIED CONTROLS



5351 E. Thompson Road Box 128
Indianapolis, IN 46237
www.specifiedcontrols.com
Phone: 888.359.0365

SC-08-1306-051221