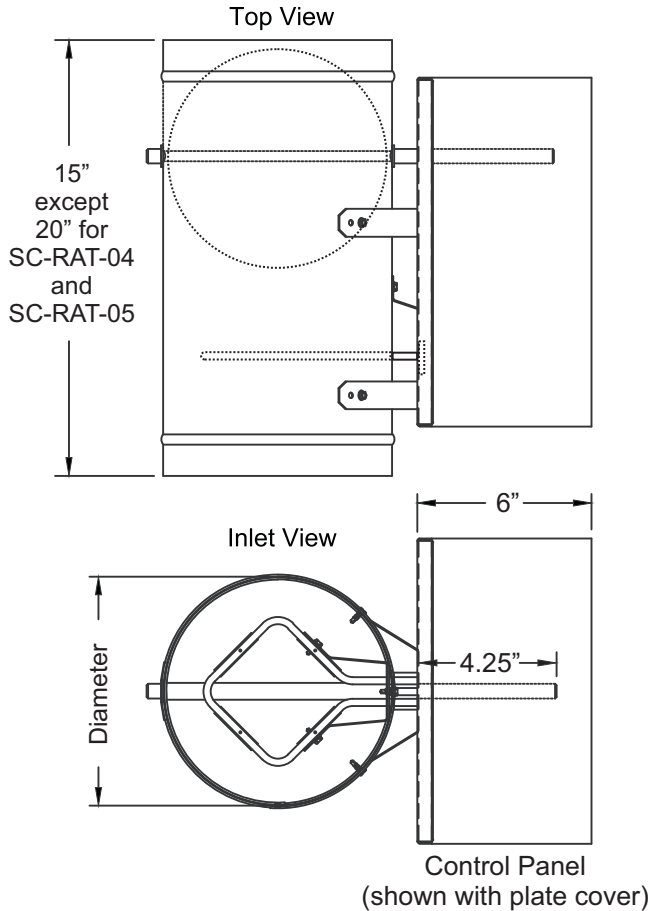


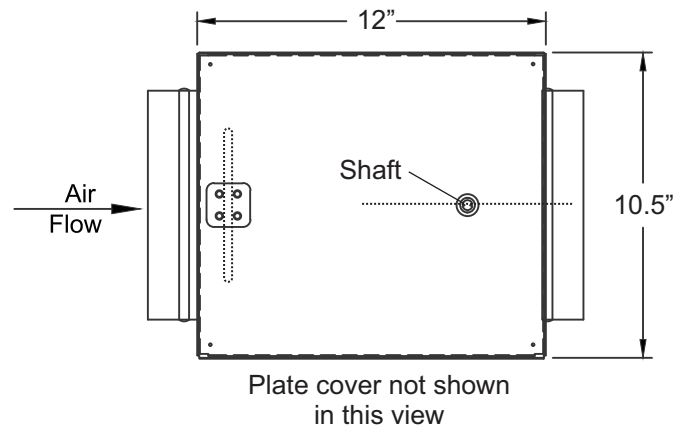
Submittal Sheet

JOB NAME _____
 ARCHITECT _____
 ENGINEER _____
 CONTRACTOR _____
 LOCATION _____

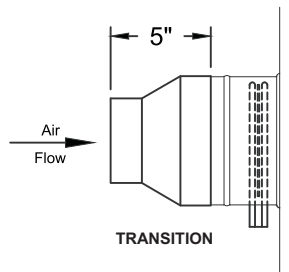
SC-RAT-XX RETRO AIR TERMINAL



Model Number	Inlet Diameter	
	in.	mm
SC-RAT-04	3.88	99
SC-RAT-05	4.88	124
SC-RAT-06	5.88	149
SC-RAT-08	7.88	200
SC-RAT-10	9.88	251
SC-RAT-12	11.88	302
SC-RAT-14	13.88	353
SC-RAT-16	15.88	403



Note:
 SC-RAT-04 and SC-RAT-05 have round 4" or 5" transitions respectively on the inlet of a SC-RAT-06 with low flow sensors. An optional transition is available for the discharge end.



STANDARD CONSTRUCTION

- Units are constructed with 22 gauge galvanized steel and 18 gauge damper assembly, integral blade seal, control panel and cover.

OPTIONAL CONSTRUCTION

- Optional stainless steel construction available.

SPECIFIED CONTROLS



5351 E. Thompson Road Box 128
 Indianapolis, IN 46237
www.specifiedcontrols.com
 Phone: 888.359.0365